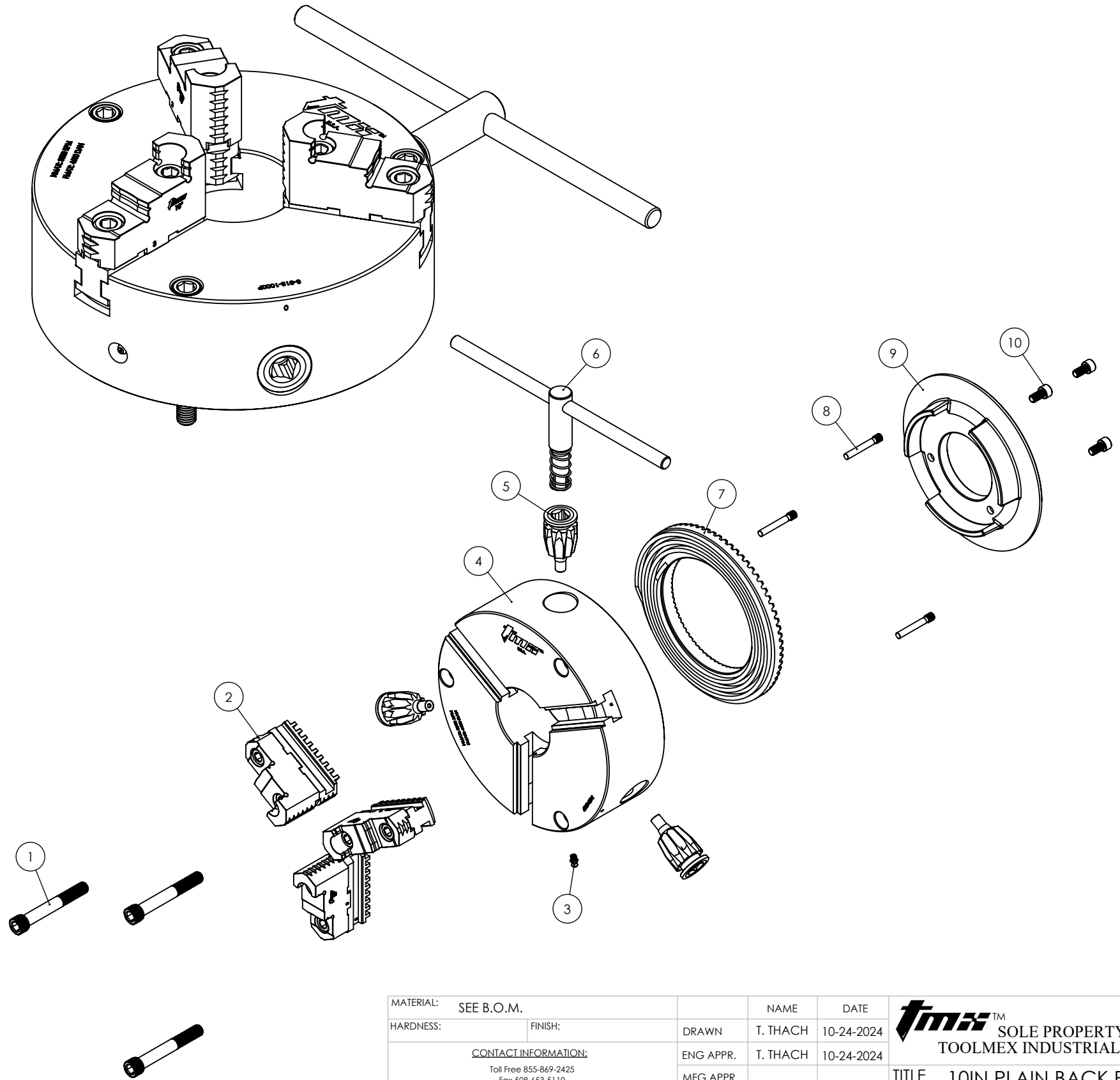


ITEM NO.	PART NUMBER	DESCRIPTION	QTY
1	M12x1.75X90 SHCS	MCMMASTER P/N 91290A638	3
2	3-891-310P	FULL OEM JAW REPLACEMENT SET, 10IN, 3-JAW	3
3	M6x1.0 GREASE FITTING	MCMMASTER P/N 1105K71	1
4	C-CK10-BDY3JFM	CHUCK BODY, 10IN	1
5	3-886-310P	PINION FOR 10IN SCROLL CHUCK	3
6	3-889-012P	WRENCH FOR 10IN & 12IN SCROLL CHUCK	1
7	3-887-310P	SCROLL PLATE FOR 10IN CHUCK	1
8	3-888-910P	PINION SCREW FOR 8, 10 OR 12in CHUCK	3
9	C-CK10-COVER	PLATE, COVER, MACHINED	1
10	M8x1.25X16 SHCS	SHCS, M8x1.25X16	3

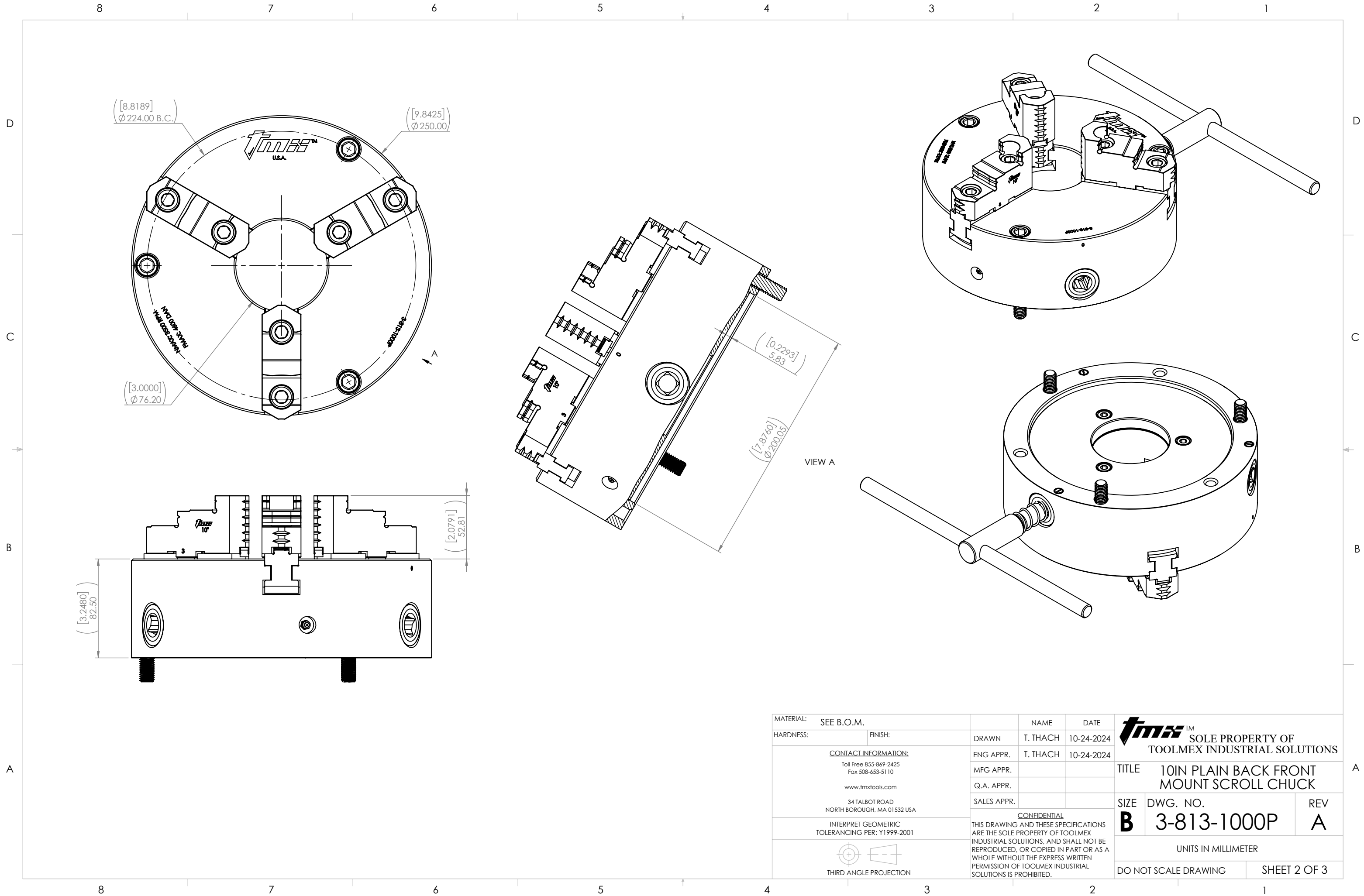
-CLICK ON LINK BELOW FOR REPLACEMENT PARTS-

[WWW.TOOLMEX.COM](http://WWW.TOOLMEX.COM)



SELLING UNIT: EACH  
 CHUCK TYPE: SCROLL  
 CHUCK SIZE: 10IN  
 BODY MATERIAL: FORGED STEEL  
 NUMBER OF JAWS: 3  
 JAW TYPE: 2 PIECES  
 WEIGHT: 64 LBS  
 MOUNT TYPE: FRONT  
 GRIPPING FORCE: 4600 daN  
 SPEED: 3500 RPM Max.

MATERIAL:	SEE B.O.M.	NAME	T. THACH	DATE	10-24-2024
HARDNESS:		FINISH:			
CONTACT INFORMATION: Toll Free 855-869-2425 Fax 508-653-5110 www.tmxtools.com 34 TALBOT ROAD NORTH BOROUGH, MA 01532 USA			DRAWN ENG APPR. MFG APPR. Q.A. APPR. SALES APPR.	T. THACH T. THACH	10-24-2024
INTERPRET GEOMETRIC TOLERANCING PER: Y1999-2001			CONFIDENTIAL THIS DRAWING AND THESE SPECIFICATIONS ARE THE SOLE PROPERTY OF TOOLMEX INDUSTRIAL SOLUTIONS, AND SHALL NOT BE REPRODUCED, OR COPIED IN PART OR AS A WHOLE WITHOUT THE EXPRESS WRITTEN PERMISSION OF TOOLMEX INDUSTRIAL SOLUTIONS IS PROHIBITED.		TITLE 10IN PLAIN BACK FRONT MOUNT SCROLL CHUCK
THIRD ANGLE PROJECTION		UNITS IN MILLIMETER		SIZE <b>B</b>	DWG. NO. 3-813-1000P
DO NOT SCALE DRAWING				REV <b>A</b> SHEET 1 OF 3	



[8.8189]  
Ø 224.00 B.C.

[9.8425]  
Ø 250.00

[3.0000]  
Ø 76.20

[0.2293]  
5.83

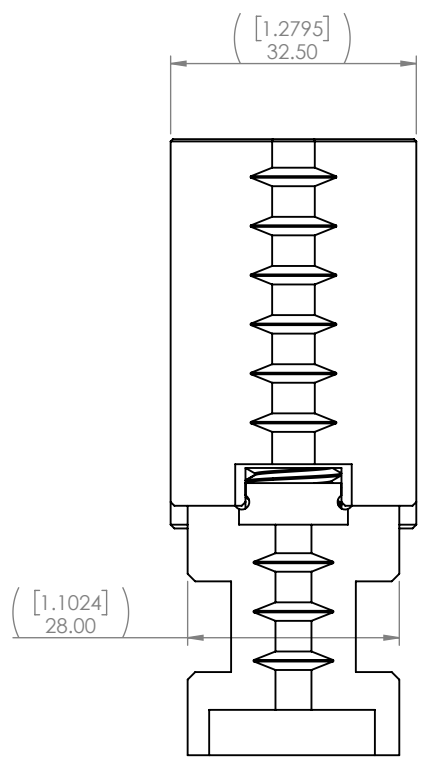
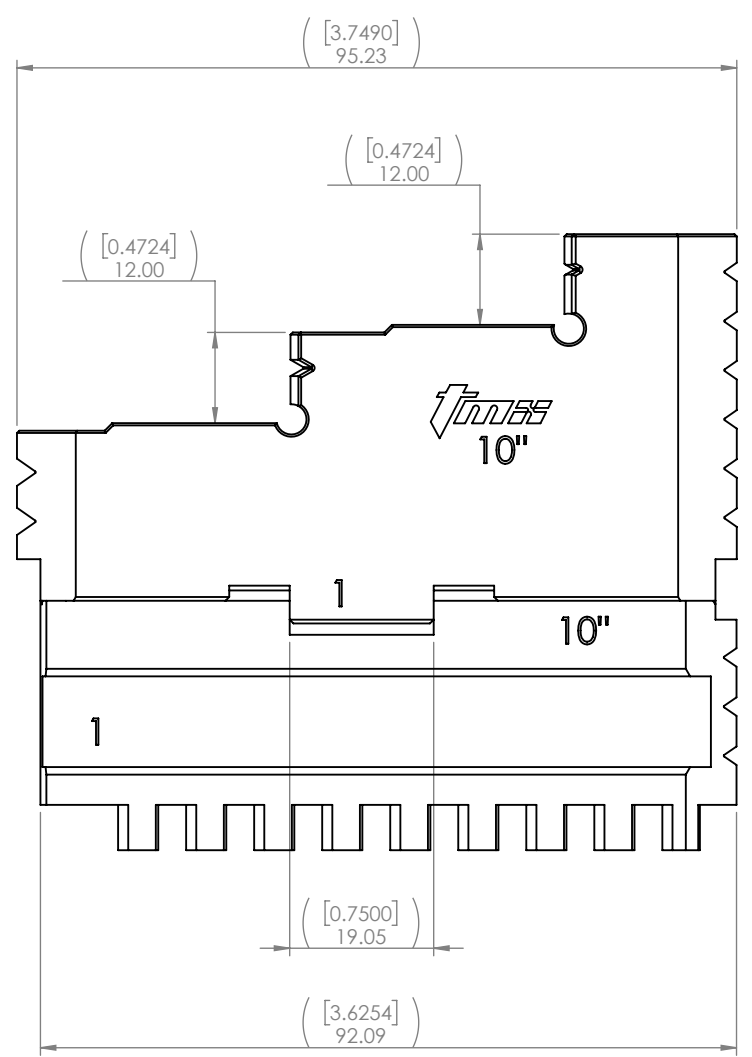
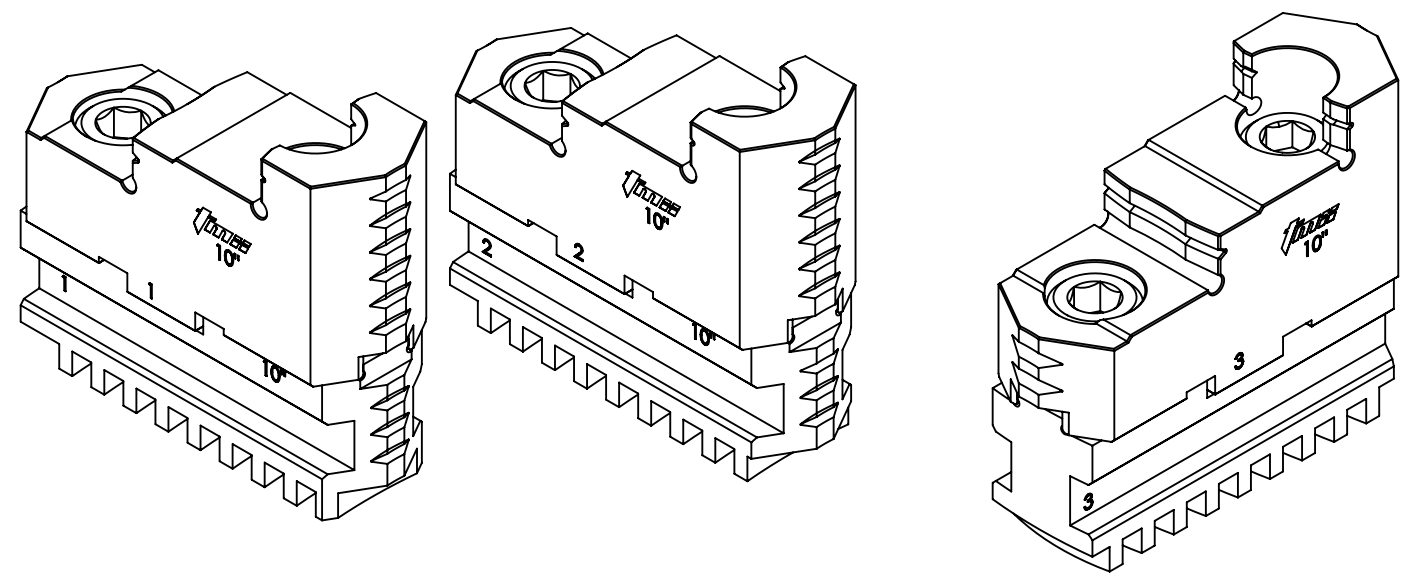
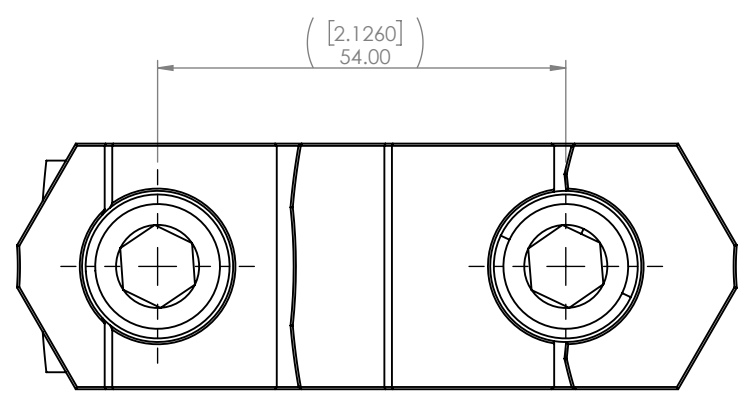
[7.8760]  
Ø 200.05

[2.0791]  
52.81

[3.2480]  
82.50

MATERIAL:	SEE B.O.M.	NAME	T. THACH	DATE	10-24-2024	
HARDNESS:		FINISH:		DRAWN	T. THACH	
<p><u>CONTACT INFORMATION:</u> Toll Free 855-869-2425 Fax 508-653-5110  www.tmxtools.com  34 TALBOT ROAD NORTH BOROUGH, MA 01532 USA</p>			ENG APPR.	T. THACH	10-24-2024	
			MFG APPR.			
			Q.A. APPR.			
			SALES APPR.			
<p>INTERPRET GEOMETRIC TOLERANCING PER: Y1999-2001</p>			<p><b>CONFIDENTIAL</b> THIS DRAWING AND THESE SPECIFICATIONS ARE THE SOLE PROPERTY OF TOOLMEX INDUSTRIAL SOLUTIONS, AND SHALL NOT BE REPRODUCED, OR COPIED IN PART OR AS A WHOLE WITHOUT THE EXPRESS WRITTEN PERMISSION OF TOOLMEX INDUSTRIAL SOLUTIONS IS PROHIBITED.</p>			
<p>THIRD ANGLE PROJECTION</p>						
<p><b>TOOLMEX™</b> SOLE PROPERTY OF TOOLMEX INDUSTRIAL SOLUTIONS</p>				<p>TITLE 10IN PLAIN BACK FRONT MOUNT SCROLL CHUCK</p>		
<p>SIZE DWG. NO.</p>		<p><b>B</b> 3-813-1000P</p>		<p>REV <b>A</b></p>		
<p>UNITS IN MILLIMETER</p>				<p>DO NOT SCALE DRAWING SHEET 2 OF 3</p>		

8 7 6 5 4 3 2 1



**-CLICK ON LINKS BELOW FOR REPLACEMENT PARTS-**

[3-883-310P, HARD TOP JAWS, 6IN, 3-JAW 3 PC SET](#)

[3-885-310P, HARD MASTER JAWS, 6IN, 3-JAW 3 PC SET](#)

MATERIAL:	SEE B.O.M.	NAME	T. THACH	DATE	10-24-2024	<b>TOOLMEX INDUSTRIAL SOLUTIONS</b> TITLE 10IN PLAIN BACK FRONT MOUNT SCROLL CHUCK SIZE DWG. NO. <b>B</b> 3-813-1000P REV <b>A</b> UNITS IN MILLIMETER DO NOT SCALE DRAWING SHEET 3 OF 3
HARDNESS:		FINISH:		DRAWN	T. THACH	
CONTACT INFORMATION: Toll Free 855-869-2425 Fax 508-653-5110 www.tmxtools.com 34 TALBOT ROAD NORTH BOROUGH, MA 01532 USA			ENG APPR.	T. THACH	10-24-2024	
INTERPRET GEOMETRIC TOLERANCING PER: Y1999-2001 THIRD ANGLE PROJECTION			MFG APPR.			
			Q.A. APPR.			CONFIDENTIAL THIS DRAWING AND THESE SPECIFICATIONS ARE THE SOLE PROPERTY OF TOOLMEX INDUSTRIAL SOLUTIONS, AND SHALL NOT BE REPRODUCED, OR COPIED IN PART OR AS A WHOLE WITHOUT THE EXPRESS WRITTEN PERMISSION OF TOOLMEX INDUSTRIAL SOLUTIONS IS PROHIBITED.
			SALES APPR.			

8 7 6 5 4 3 2 1